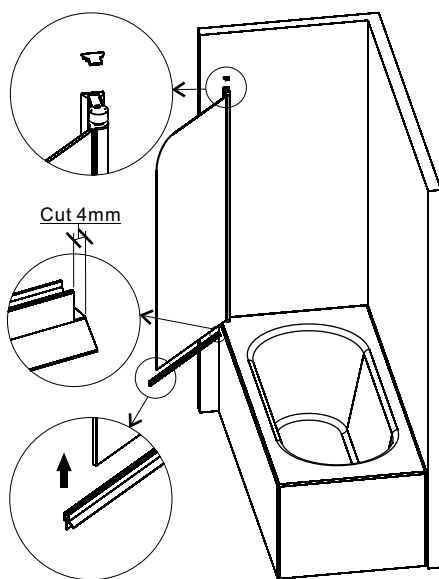


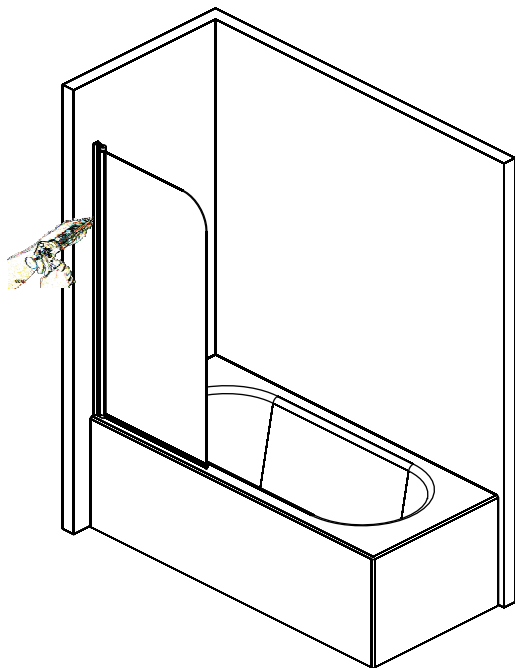
Check each parts and ensure in good parallelism and perpendicularity. Drill holes in order to fasten the profile as the figure show.(Use $\Phi 3.2$ bit)

7



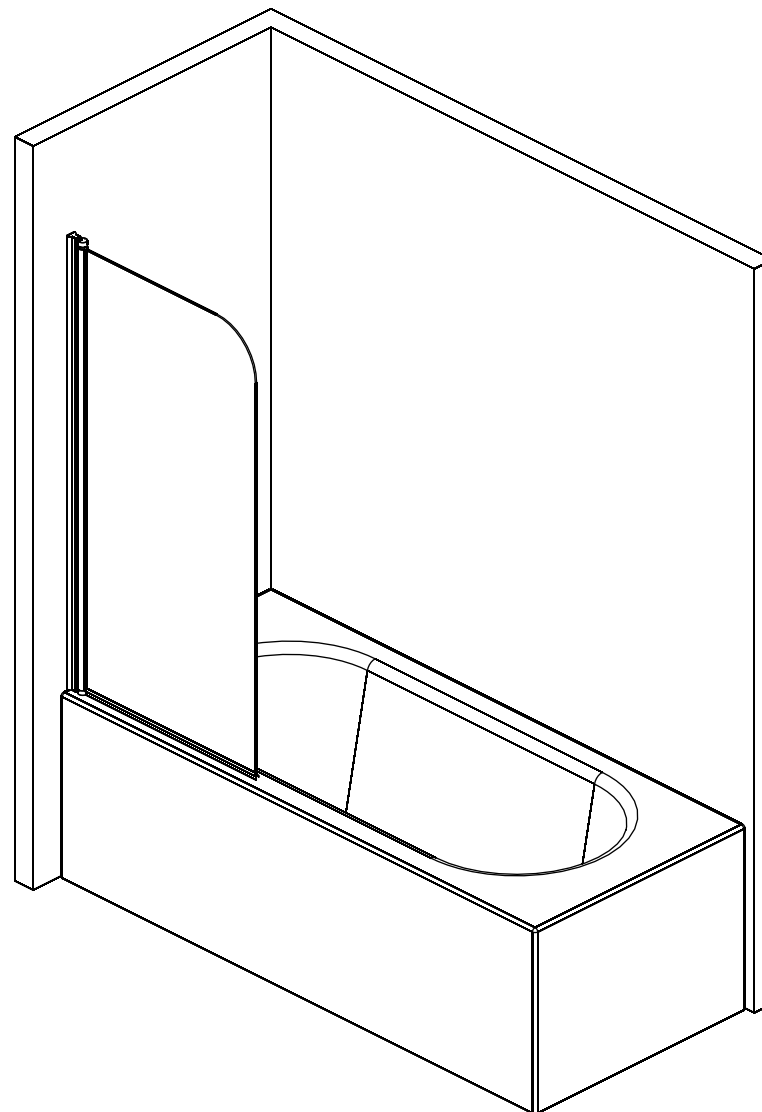
Install the bottom waterproof strip.

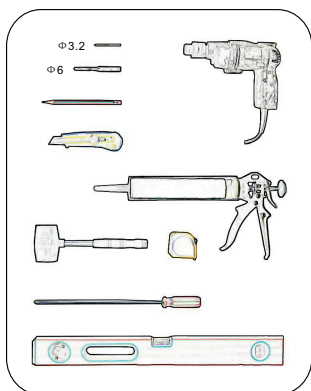
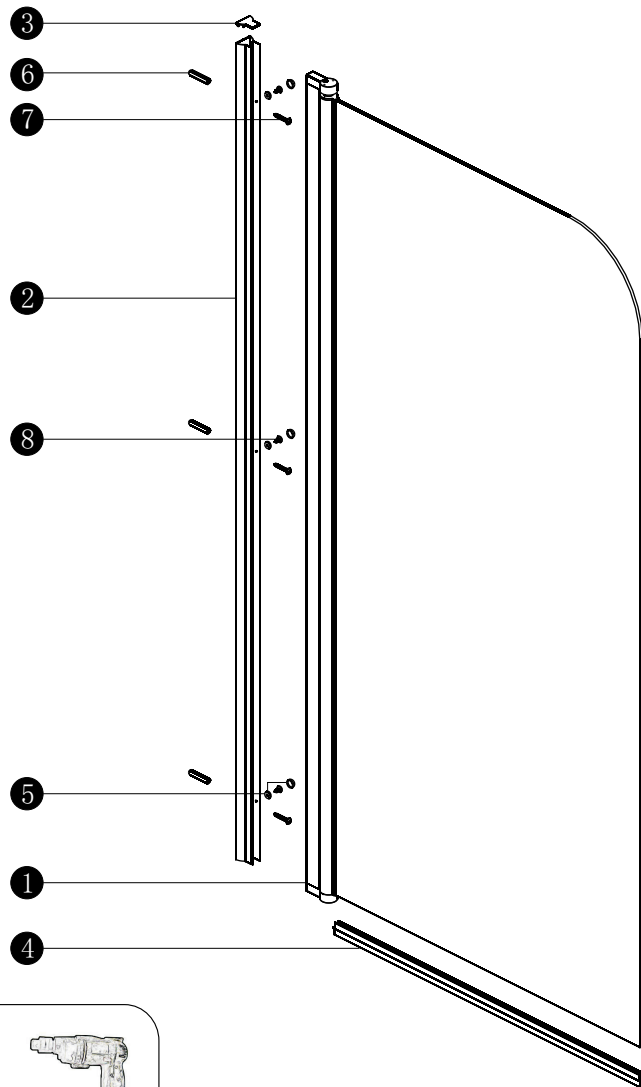
6



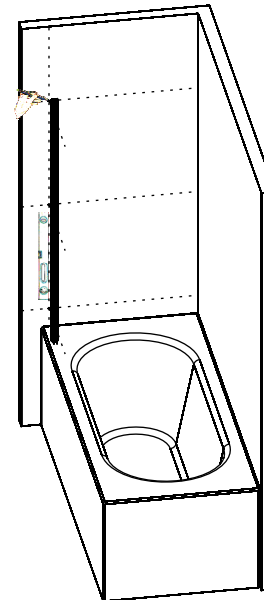
Tips:
Allow the silicone to fully dry
before operating the door,
suggest after 24 hours.

Instruction manual of PBS-PP

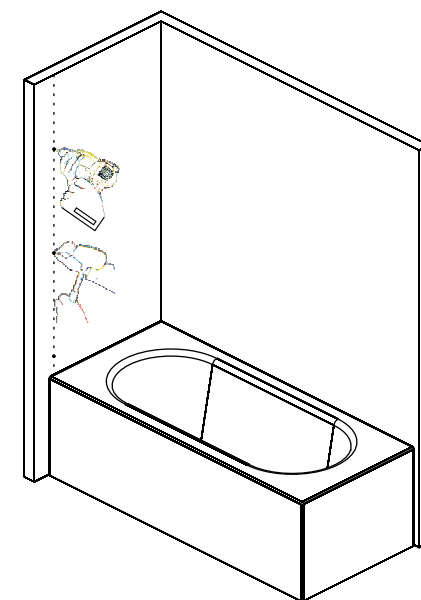




No.	Description	QTY	No.	Description	QTY
①	Moved glass	1pcs	⑥	Wall plug	3pcs
②	Wall profile	1pcs	⑦	Truss head screw st4 30	3pcs
③	Wall profile cap	1pcs	⑧	Round head screw st4 10	3pcs
④	Bottom waterproof strip	1pcs			
⑤	Screw cap	3pcs			

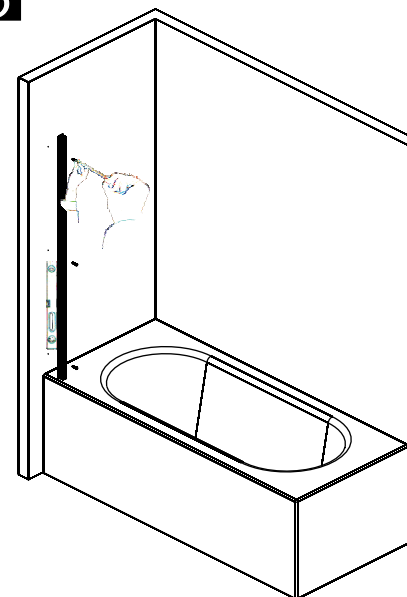


Mark out the holes on the wall.



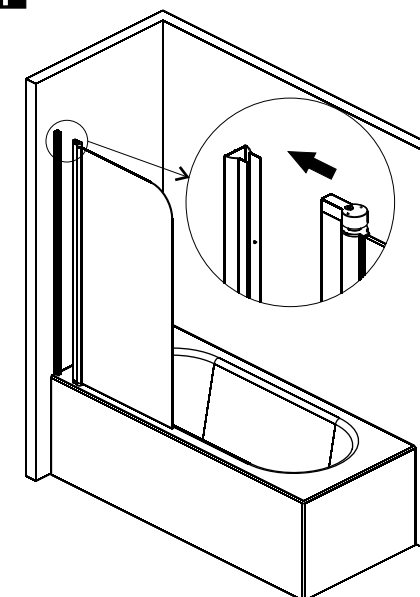
Drill holes and insert the wall plugs.
(Use the Φ6 bit)

3



Fasten the wall profile to the wall
by ST4X30 truss head screw.

4



Put the moved door to the wall profile.