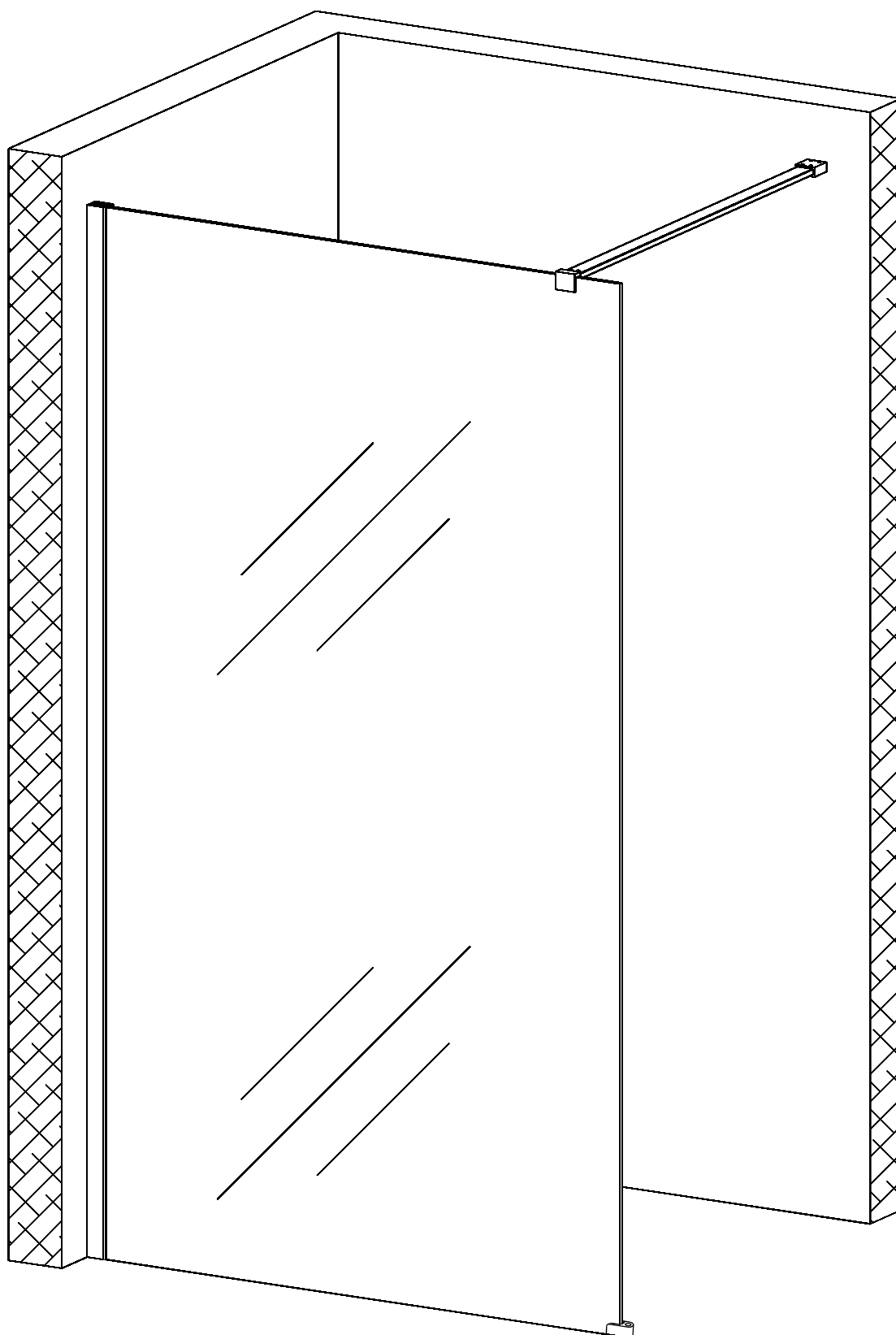
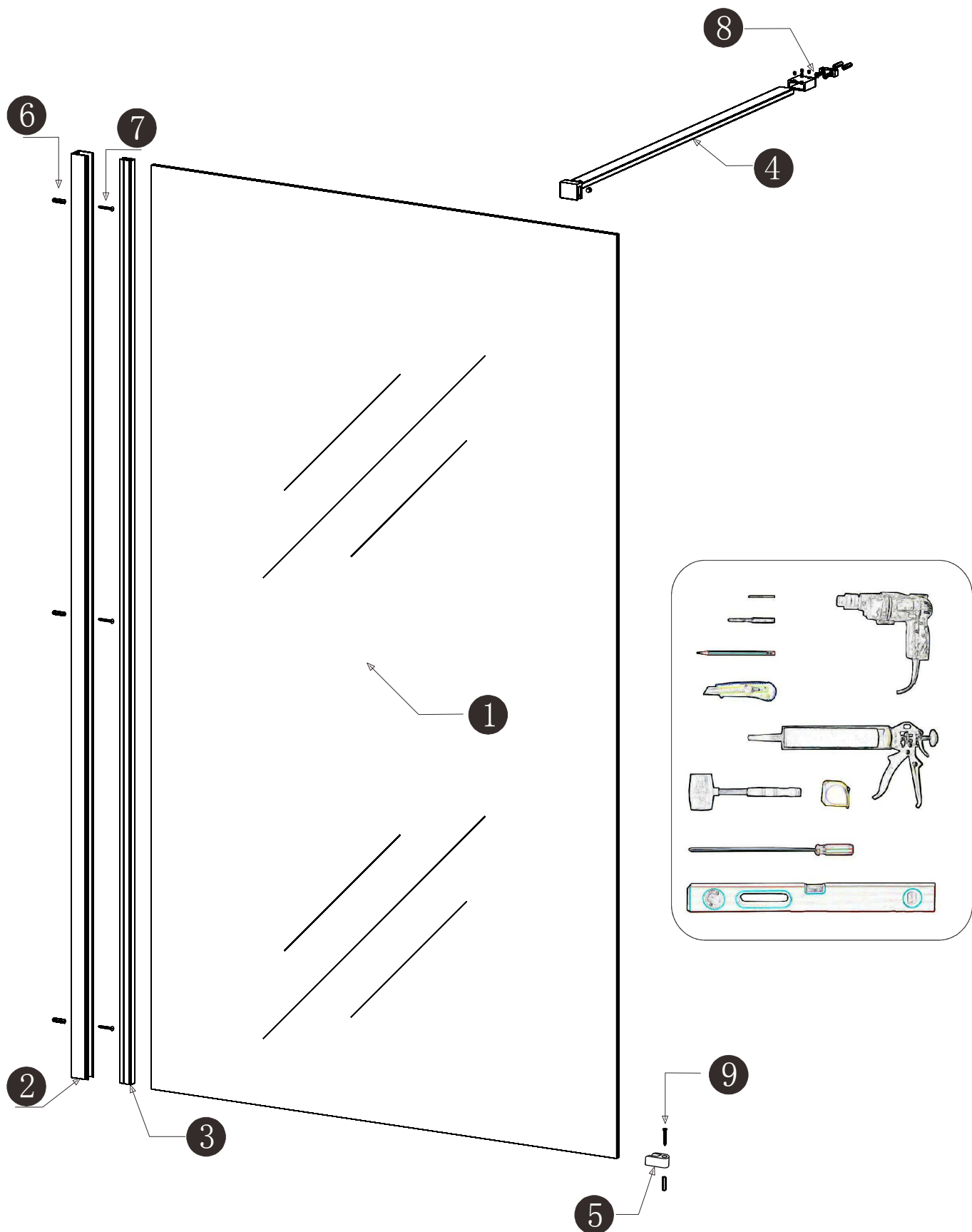
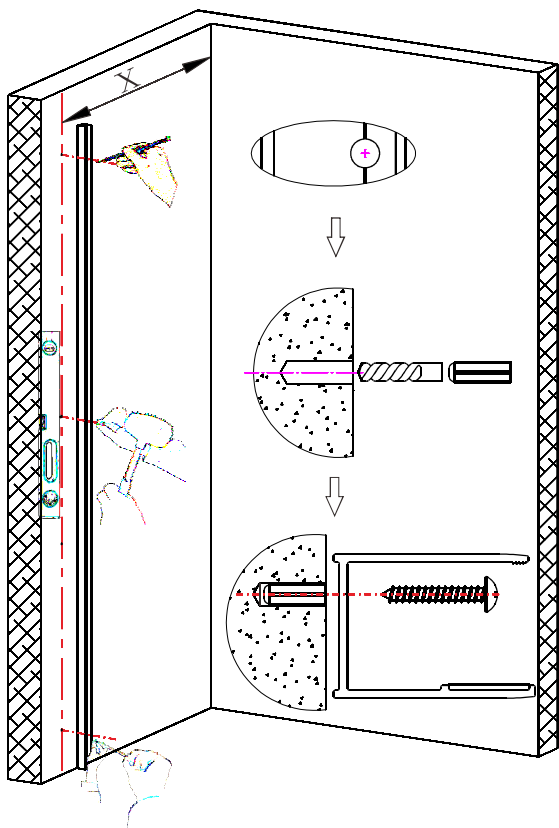


INSTRUCTION MANUAL of PGP-860/960/1160



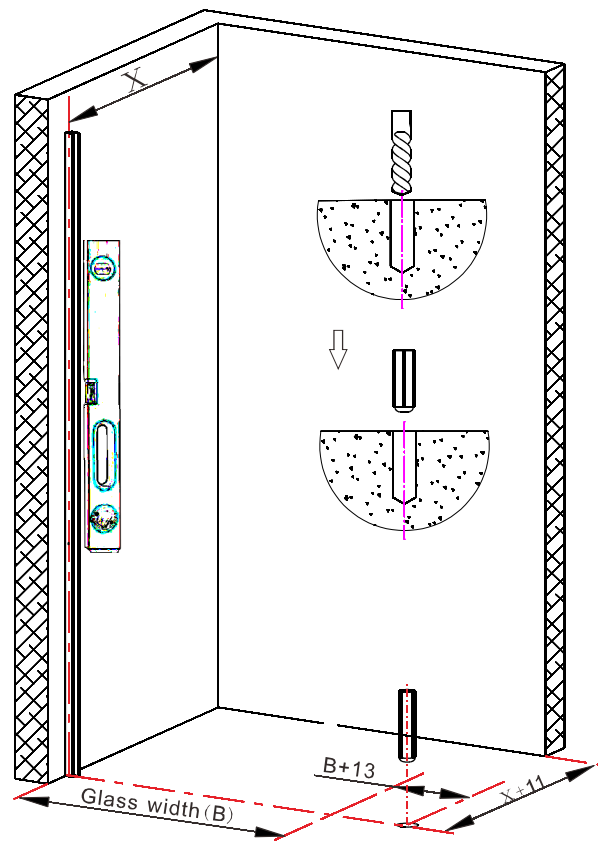


No.	Item	Qty	No.	Item	Qty	No.	Item	Qty
①	Fixed panel	1pcs	④	Support bar	1pcs	⑦	Round head screw	3pcs
②	Wall profile	1pcs	⑤	Floor clip	1pcs	⑧	Counter sunk screw St5×30	2pcs
③	Press profile	1pcs	⑥	Wall plug	6pcs	⑨	Counter sunk screw St4×30	1pcs



Ensure the correct length of X: Mark the hole on wall as per the hole in wall profile (Pay attention to the direction of wall profile). Then use $\Phi 6$ drill bit to drill holes for wall plug. And fix the wall profile with round head screw. Attn.: $X=1130\text{mm}$

1



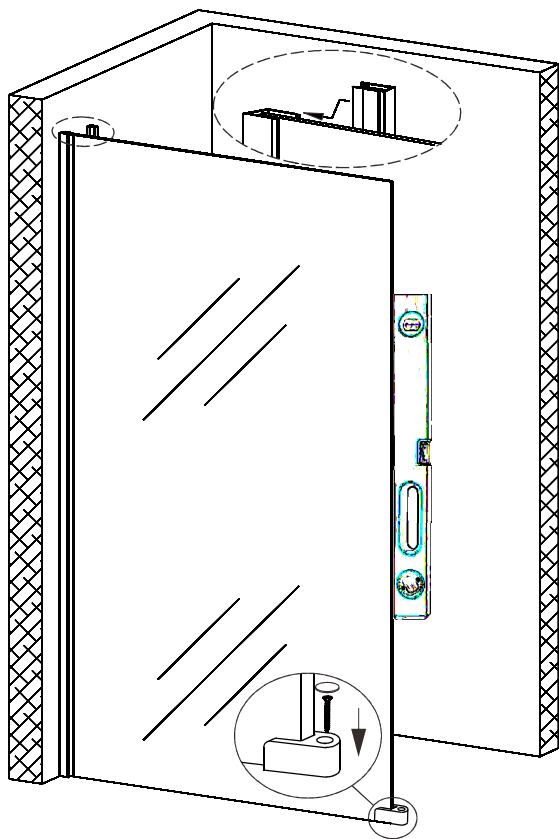
Ensure the position of floor clip: Confirm the hole of floor clip then drill hole for wall plug.

Attn.: wall to clip hole is $X+11$ and $B+13$.

$X=1130\text{mm}$, $B=860(\text{PGP-860})/B=960(\text{PGP-960})/B=1160(\text{PGP-1160})$

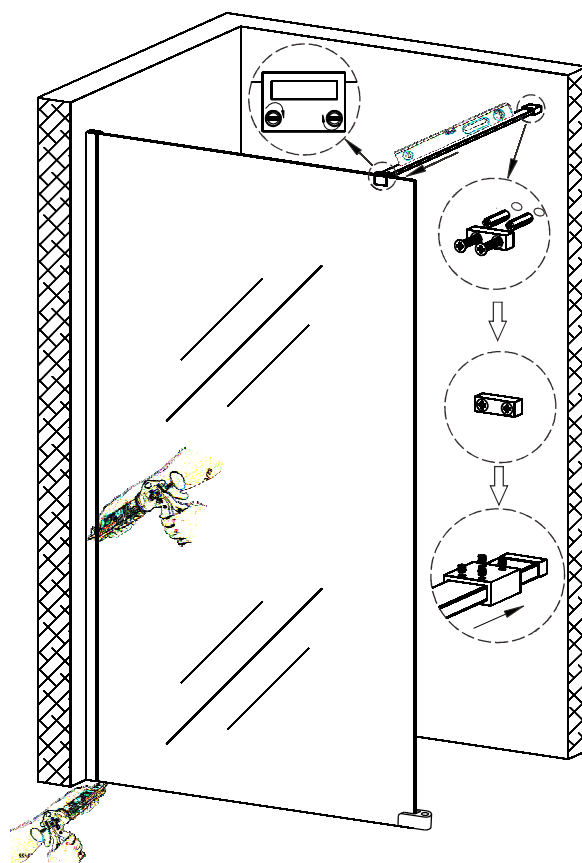
2

3



Glass and floor clip installation: Insert the glass gently to wall profile, then insert the press profile into wall profile. Please make sure glass is vertical. Finally screw the floor clip.

4



Support bar installation: Put the top clip of support bar on glass, ensuring the position of top clip and keep the bar leveled. Drill holes on wall for wall plug, then fix the pedestal on wall. Screw the wall connector and top clip tightly. Finally put silicon on glass bottom and do cleaning.

Attn.: Usage after 24 hours.